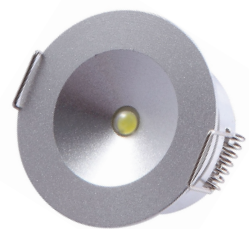


Glen



Dual Test Emergency Downlight
Selectable Self Test or Manual Test
'At the flick of a switch'



Glen LED Downlight

The Glen is a 3w recessed LED downlight; a compact fitting that utilises the latest LED technology and provides excellent value for money.

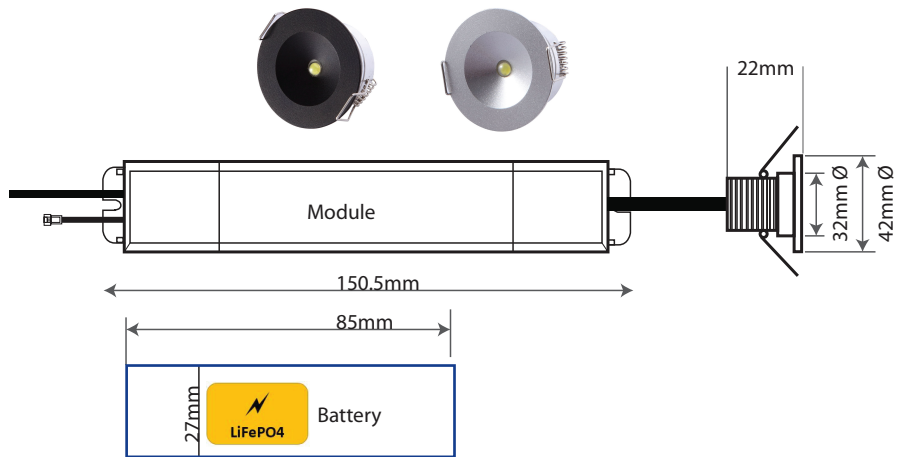
The Glen offers substantial energy & maintenance savings over its lifetime & benefits from a LiFePO4 battery

Features

- LiFePO4 battery
- Long life LED technology
- Polycarbonate/metal construction
- Simple 'plug & go' installation
- Non maintained operation 3 hours emergency backup
- Low environmental impact
- Beam angle 120°
- Colour temperature 5500K
- Green charge LED
- Meets BS EN 60598-2-22 and other relevant standards



Image above shows module, battery and white lamp head
Image below shows black & silver bezel options



PHOTOMETRIC SPACING DATA (1 lux)

Mounting height		
2.8m	3.5	7.1
4m	3.1	6.4

SPECIFICATIONS

Light Source	SMT LED 5500K (3W)
Light Output	103.22lm
IP Rating	IP20
Emergency Duration	≥ 3 hours
Mains Voltage	220 - 240V AC 50Hz ± 10%
Mains Current (max)	90mA
Recharge Period	24 hours
Charge Indicator	Green LED
Temperature Range	10°C - 40°C
Weight	250g
Battery	3.2V 1500mAh LiFePO4

PRODUCT CODE	DESCRIPTION
EGLN31	Glen 3w non-maintained downlight - White Bezel
E/GLEN/BEZ /BK	Glen Black Bezel - Pack of 5
E/GLEN/BEZ /SI	Glen Silver Bezel - Pack of 5

Errors & omissions excluded. Specification is subject to change without notice.



www.channelsafety.co.uk

Tel: 0845 884 7000

Email: customerservices.lfs@deta.co.uk

Deta Electrical Company Ltd.

UK: Panattoni Park Luton Road Chilton Bedfordshire LU4 9TT UK

EU: Unit 16 Ashbourne Industrial Estate Ashbourne Co. Meath A84 W972

sales@deta.co.uk